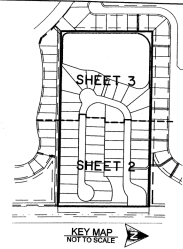


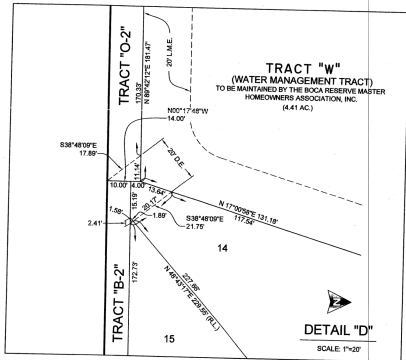
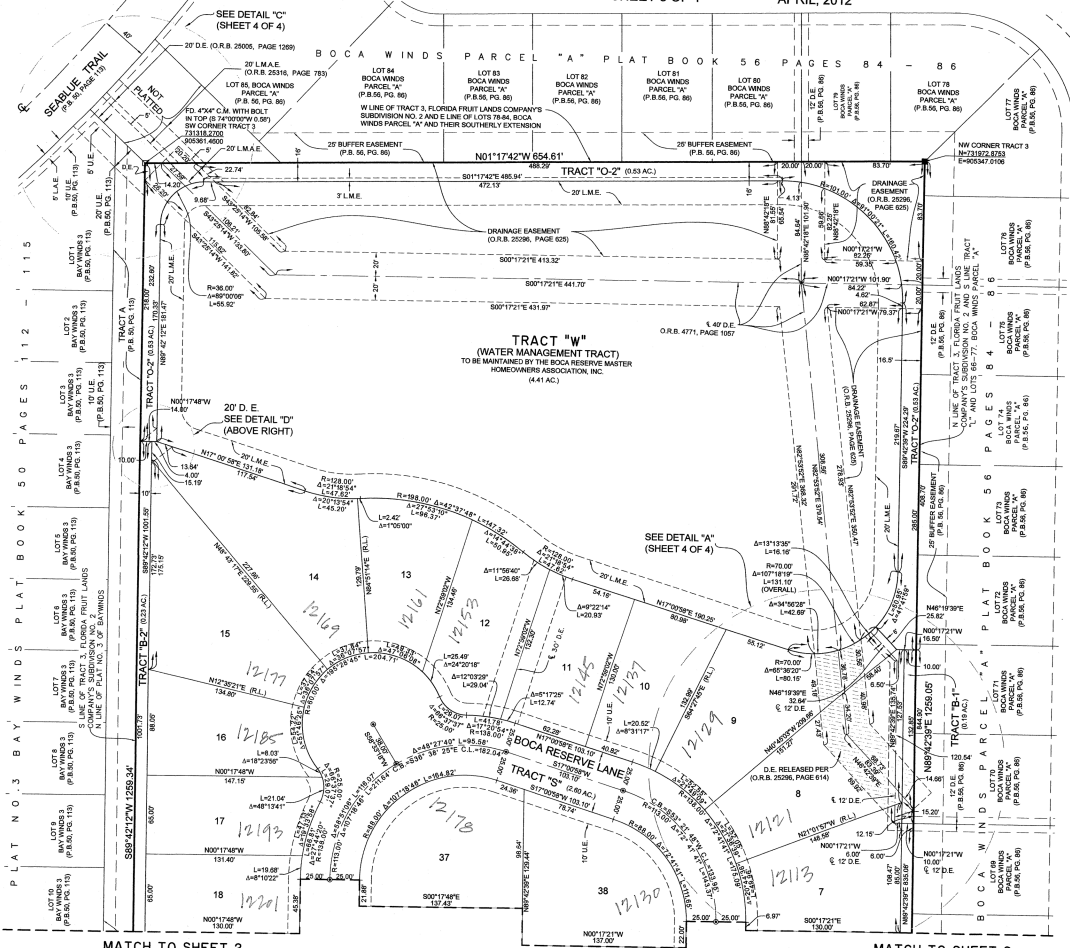
A PLANNED UNIT DEVELOPMENT BOCA RESERVE PUD

LYING IN SECTION 27, TOWNSHIP 47 SOUTH, RANGE 41 EAST, BEING A REPLAT OF A PORTION OF TRACT 3, FLORIDA FRUIT LANDS COMPANY'S SUBDIVISION NO. 2 AS RECORDED IN PLAT BOOK 1, PAGE 102, PUBLIC RECORDS OF PALM BEACH COUNTY, FLORIDA.
SHEET 3 OF 4 APRIL, 2012

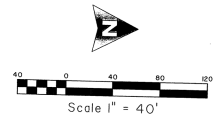


200

COUNTY OF PALM BEACH }
STATE OF FLORIDA } 88
THIS PLAT WAS FILED FOR RECORD AT }
M. THE PUBLIC OFFICE AND DULY }
RECORDED IN PLAT BOOK NO. }
1789 }
SHARON R. BOCK }
CLERK AND COMPTROLLER }
BY: } D.C.



COORDINATE NOTE:
STATE PLANE COORDINATES SHOWN ARE GRID DATUM, 845 1893 ADJUSTMENT, FLORIDA EAST ZONE, COORDINATE SYSTEM 1983 STATE PLANE, TRANSVERSE MERCATOR PROJECTION
LINEAR UNIT = US SURVEY FEET
ALL DISTANCES ARE GRID
SCALE FACTOR = 1.0000127
GROUND DISTANCE X SCALE FACTOR = GRID DISTANCE
S101°19'31.6\"/>

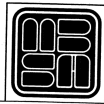


PLAT NO. 3 BAY WINDS PLAT BOOK 50 PAGES 112 - 115

MATCH TO SHEET 2

MATCH TO SHEET 2

SHEET 3 OF 4



MICHAEL B. SCHORAH & ASSOCIATES, INC.
1800 FOREST HILL BLVD., SUITE 200
WEST PALM BEACH, FLORIDA 33411-2000
E89 2401 TEL. (561) 968-0080 FAX. (561) 942-0728 L84 2408
BOCA RESERVE PUD
A PLANNED UNIT DEVELOPMENT